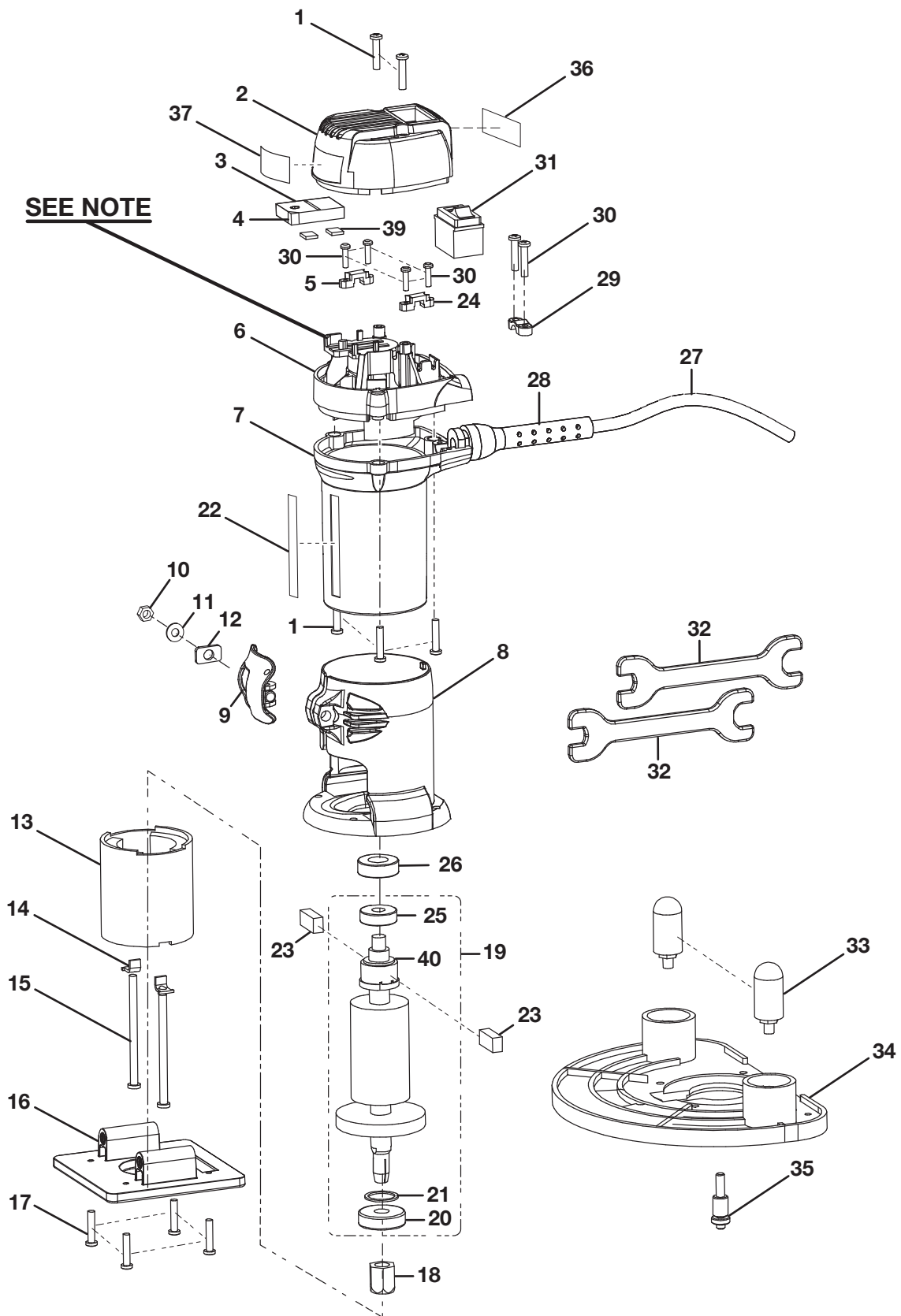


**RYOBI
LAMINATE TRIMMER
MODEL NO. TR45
REPAIR SHEET**

RYOBI LAMINATE TRIMMER - MODEL NUMBER TR45

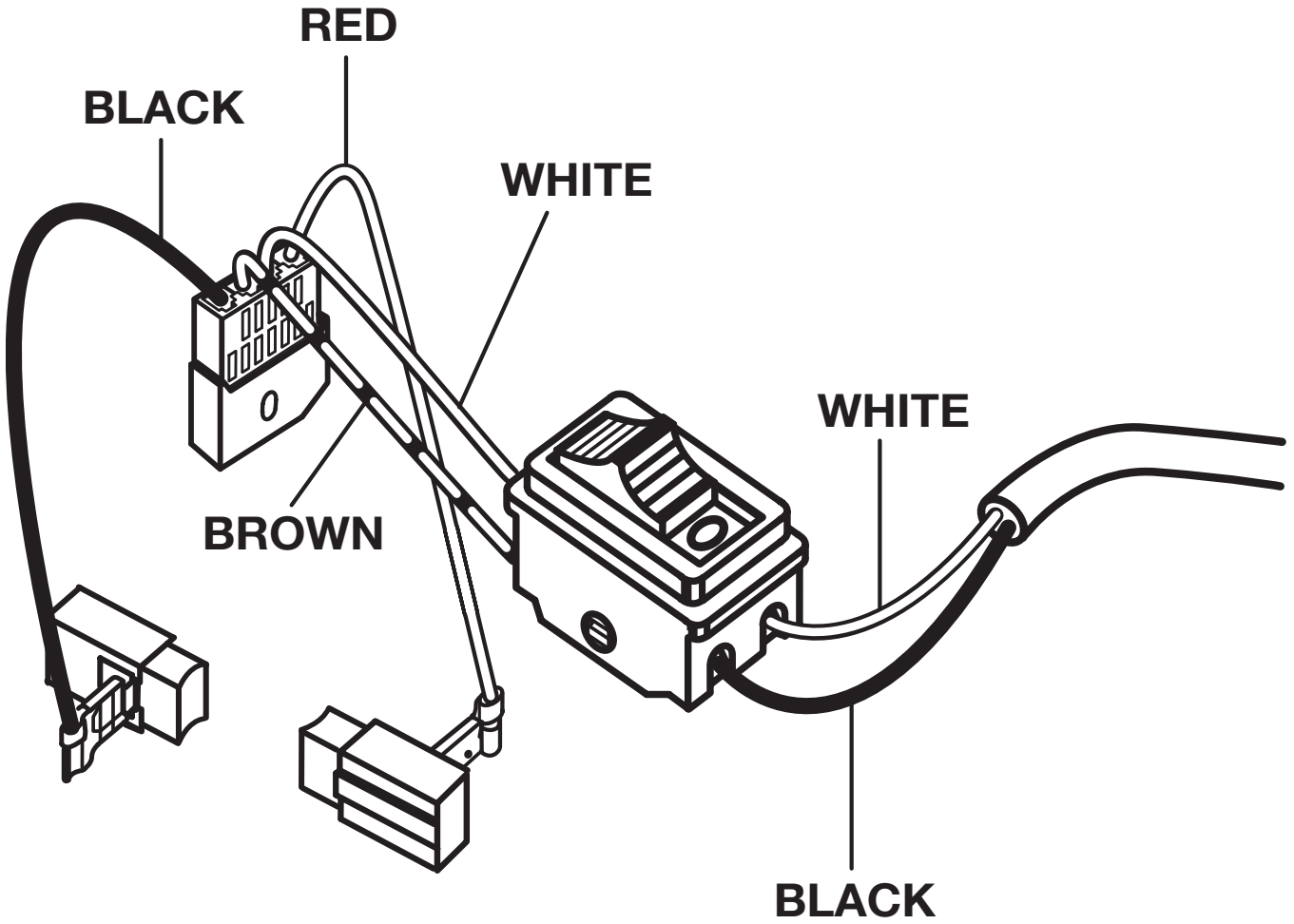


RYOBI LAMINATE TRIMMER – MODEL NUMBER TR45

The model number will be found on a plate attached to the motor housing. Always mention the model number in all correspondence regarding your **LAMINATE TRIMMER** or when ordering repair parts.

PARTS LIST

KEY NO.	PART NUMBER	DESCRIPTION	QTY.
1	6620805	* SCREW (M4 X 16 mm PAN HD.)	2
2	512070001	TOP CAP	1
3	290083003	WIRE ASSEMBLY	1
4	840108001	RECTIFIER	1
5	512225402	LEFT BRUSH MOUNT	1
6	512044002	MOUNTING FRAME	1
7	512045001	MOTOR HOUSING	1
8	342073001	HOUSING BASE	1
9	301040001	LATCH ASSEMBLY	1
10	6797401	LOCK NUT	1
11	670060001	WASHER	1
12	671352001	WASHER, SQAURE	1
13	740628001	FIELD	1
14	630115001	RETAINING CLIP	2
15	6623704	* SCREW (M4 X 66 mm PAN HEAD)	2
16	512047002	SQUARE BASE	1
17	660213013	* SCREW (M4 X 12 mm PAN HEAD)	4
18	690190002	COLLET NUT	1
19	200214005	ARMATURE ASSEMBLY (INCL. KEY NO'S. 20, 21, 25 & 40)	1
20	690191001	BALL BEARING	1
21	690212001	RETAINING RING	1
22	940299506	HEIGHT SCALE	1
23	290075041	BRUSH ASSEMBLY	2
24	512225404	RIGHT BRUSH MOUNT	1
25	6814104	BALL BEARING (608ZZ)	1
26	560881001	RUBBER BEARING SEAT	1
27	730377012	POWER CORD	1
28	5927402	BEND RELIEF	1
29	512225302	CORD CLAMP	1
30	660203003	* SCREW (M3 X 12 mm PAN HEAD)	6
31	760263002	SWITCH	1
32	690214001	WRENCH	2
33	690274001	SPINDLE HANDLE	2
34	550818001	ROUTER BASE	1
35	671277002	BEARING BIT	1
36	940214076	DATA PLATE	1
37	940054106	LOGO PLATE	1
38	300912077	CARRYING CASE (NOT SHOWN)	1
39	900534001	NEOPRENE WASHER	1
40	680821001	RETAINING RING	1
	983000429	OPERATOR'S MANUAL	
	10-21-08		
	(REV:03)		



WIRING DIAGRAM