

RYOBI
10 in. COMPOUND MITER SAW
MODEL NO. TS1342L
REPAIR SHEET

RYOBI 10 in. COMPOUND MITER SAW – MODEL NUMBER TS1342L

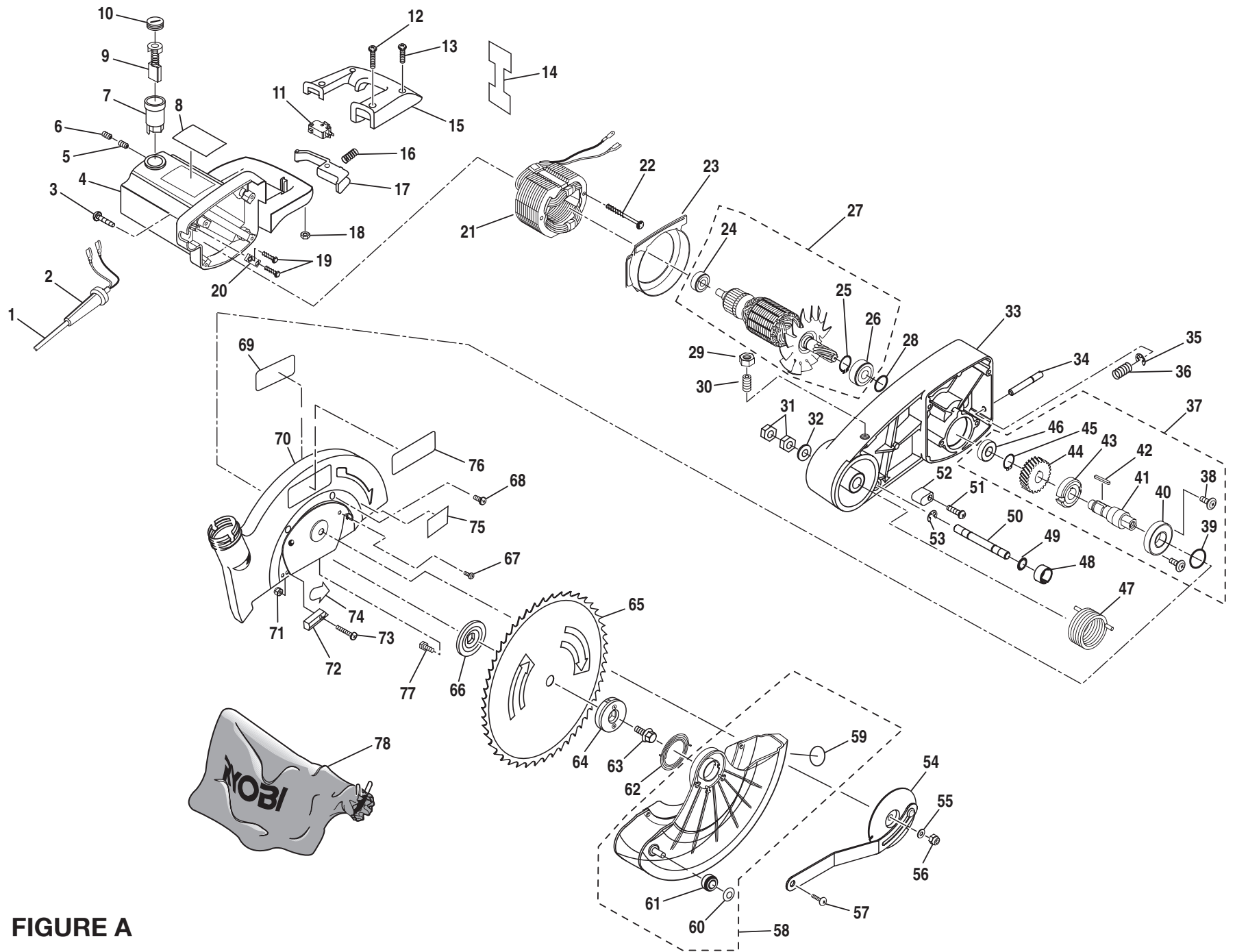


FIGURE A

RYOBI 10 in. COMPOUND MITER SAW – MODEL NUMBER TS1342L

The model number will be found on a plate attached to the motor housing. Always mention the model number in all correspondence regarding your **MITER SAW** or when ordering repair parts.

FIGURE A PARTS LIST

KEY NO.	PART NUMBER	DESCRIPTION	QTY.	KEY NO.	PART NUMBER	DESCRIPTION	QTY.
1	089100212007	Power Cord	1	42	A45204040180	Parallel Key	1
2	588004100	Bend Relief.....	1	43	588029007	Lock Ring	1
3	A19003050302	* Screw (M5 x 30 mm)	4	44	089100207062	Gear	1
4	580309000	Motor Housing	1	45	A46000150008	C-Ring.....	1
5	A18003050054	* Fixed Screw (M5 x 5 mm)	2	46	A50060000027	Ball Bearing (6000ZZ)	1
6	A95001050060	* Fixed Screw (M5 x 6 mm)	2	47	089100207025	Tension Spring	1
7	528312100	Brush Holder	2	48	588023001	Stop Pin Cap.....	1
8	089100212903	Warning Label	1	49	A63000000051	O-Ring.....	1
9	089100207107	Brush Assembly	2	50	089100212008	Stop Pin	1
10	528311004	Brush Cap	2	51	A90003040167	* Screw (M4 x 16 mm, Pan Hd.)	1
11	580302000	Switch	1	52	588021203	Stopper	1
12	A10003040307	* Screw (M4 x 30 mm, Pan Hd.)	2	53	A47000060002	E-Clip	1
13	A10003040250	* Screw (M4 x 25 mm, Pan Hd.)	2	54	089100207029	Retaining Spring Holder.....	1
14	089100212902	Hang Tag Label (French & Spanish)	1	55	A35010616105	* Washer (M6)	1
15	580311000	Handle Cover	1	56	A31703006004	* Lock Nut (M6).....	1
16	511313000	Compression Spring	1	57	589015108	Shoulder Screw.....	1
17	580312000	Switch Actuator	1	58	089100212704	Lower Blade Guard Assembly (Inc. Key Nos. 59-61)	1
18	A30003004005	* Hex Nut (M4)	4	59	089100207097	No Hands Warning Label.....	1
19	A90003040125	* Screw (M4 x 12 mm, Pan Hd.)	2	60	538417000	Retaining Ring	1
20	578313006	Cord Clamp.....	1	61	089100207103	Roller.....	1
21	9053n02200	Field Assembly.....	1	62	589021300	Torsion Spring	1
22	A90101050603	* Screw (M5 x 60 mm, Pan Hd.)	2	63	503412000	Blade Bolt	1
23	580314000	Baffle.....	1	64	089100207123	Laser Guide.....	1
24	A50006080049	Ball Bearing (608).....	1	65	089100207045	Blade.....	1
25	A46000150008	C-ring	1	66	588035105	Inner Blade Washer.....	1
26	A50060020056	Ball Bearing (6002).....	1	67	A19001040091	* Screw (M4 x 9 mm, Pan Hd.)	1
27	9053d01000	Armature Assembly (Inc. Key Nos. 24-26).....	1	68	A10003050106	* Screw (M5 x 10 mm, Pan Hd.)	4
28	A63030001240	O-Ring.....	1	69	089100212900	Data Label	1
29	A30003010007	* Hex Nut (M10)	1	70	089100212707	Upper Blade Guard Assembly (Inc. Key Nos. 71-76)	1
30	A18003100206	* Fixed Screw (M10 x 20 mm)	1	71	A31703004006	* Lock Nut (M4).....	1
31	A30003012194	* Lock Nut (M12).....	2	72	589032207	Stopper	1
32	A36031226023	* Washer (M12)	1	73	A10003040152	* Screw (M4 x 15 mm, Pan Hd.)	1
33	089100212006	Arm.....	1	74	089100207051	Warning Label	1
34	588026106	Spindle Lock Pin	1	75	089100207040	Warning Label (Upper Guard)	1
35	A47000040006	E-Ring	1	76	089100207044	Logo Label (Upper Guard)	1
36	588027005	Compression Spring	1	77	581410003	* Screw	1
37	089100212703	Output Spindle Assembly (Inc. Key Nos. 38-46)	1	78	089100207055	Dust Bag	1
38	588031004	* Screw (M5 x 10 mm)	2	79	089100212701	Motor Housing Assembly (Inc. Key Nos. 1-13 and 15-22).....	1
39	A63020000428	O-ring	1				
40	A50060040052	Ball Bearing (6004Z/RS).....	1				
41	089100207059	Gear Shaft.....	1				

* Standard Hardware Item – May Be Purchased Locally

RYOBI 10 in. COMPOUND MITER SAW – MODEL NUMBER TS1342L

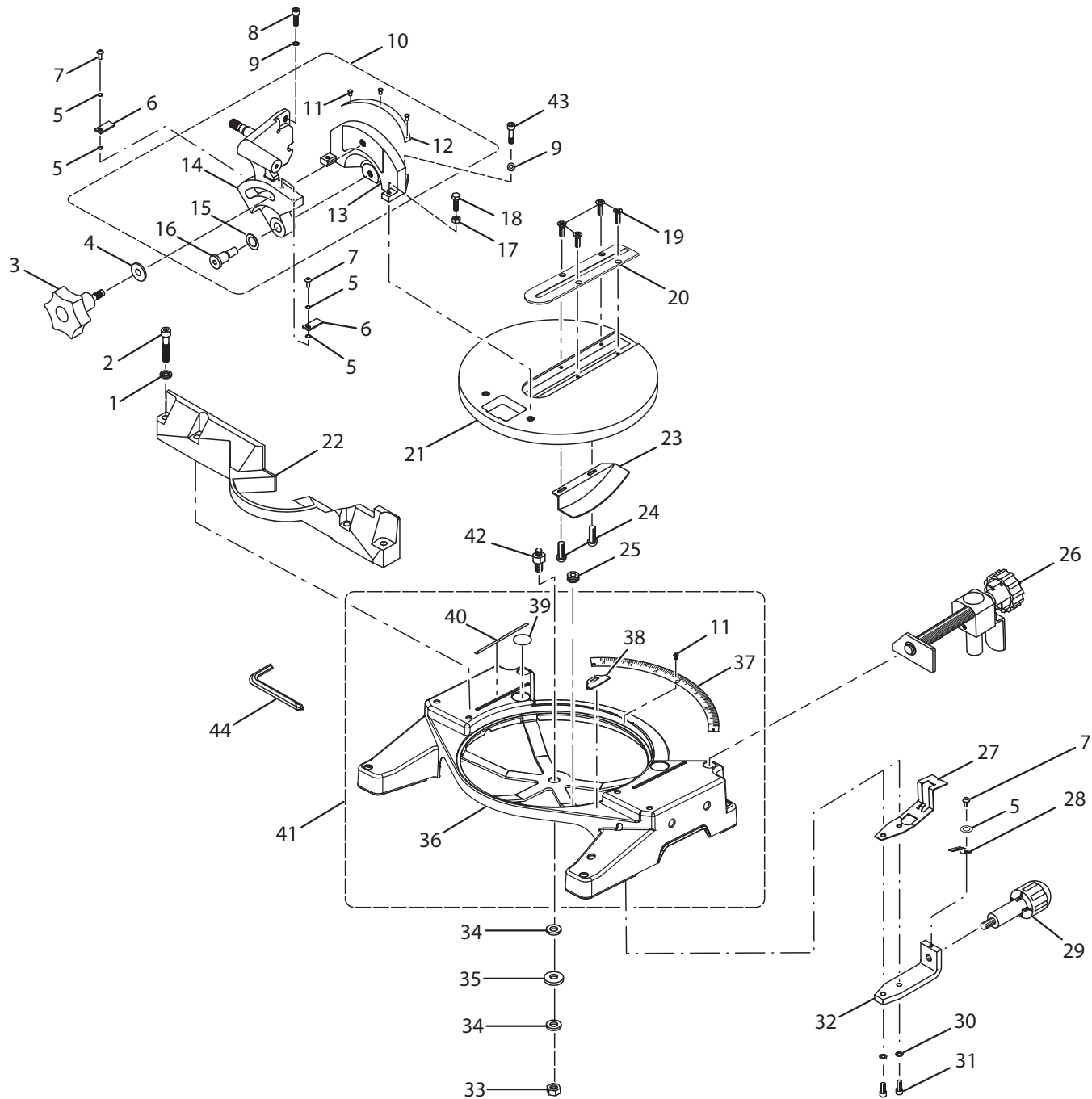


FIGURE B

RYOBI 10 in. COMPOUND MITER SAW – MODEL NUMBER TS1342L

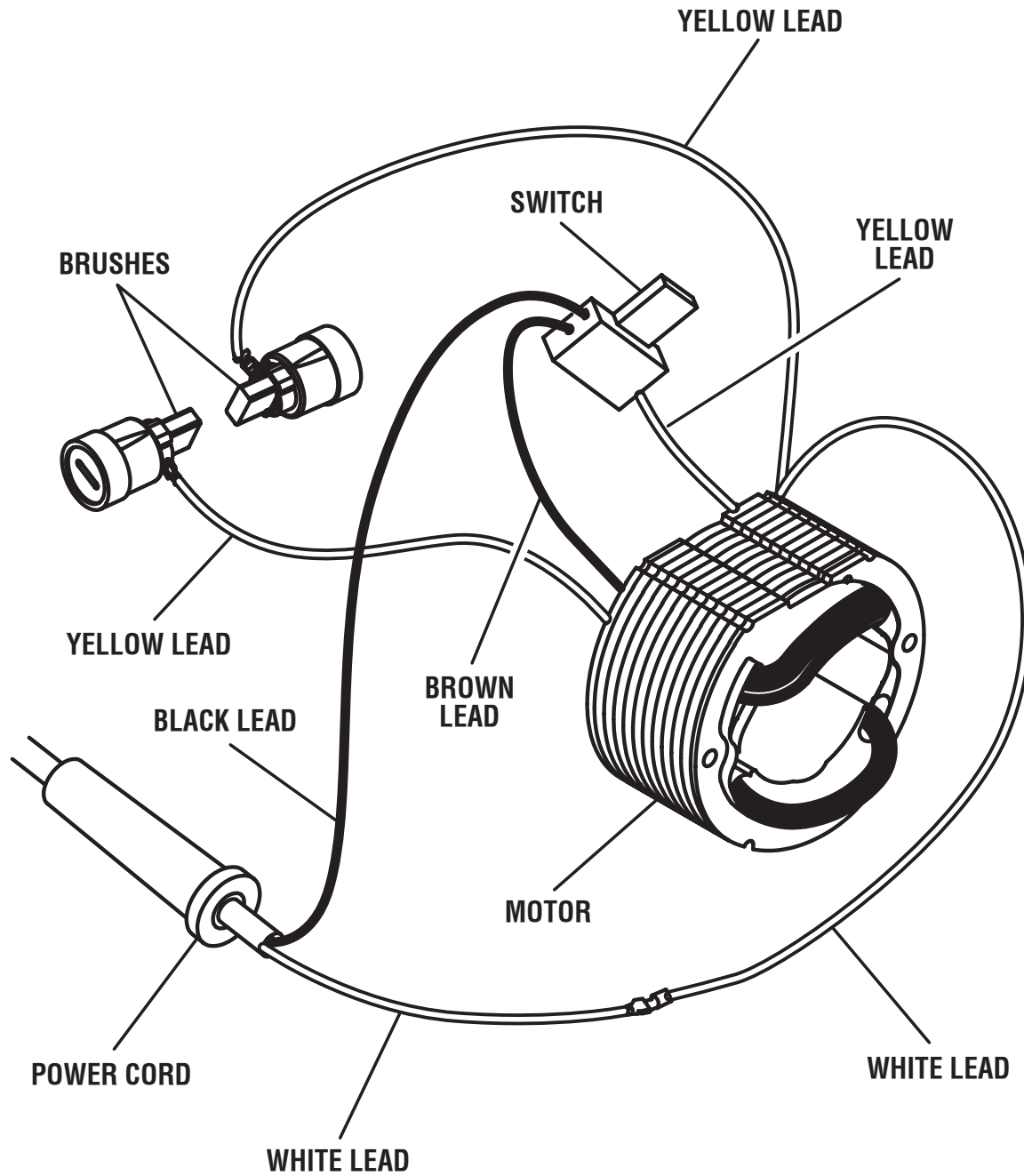
The model number will be found on a plate attached to the motor housing. Always mention the model number in all correspondence regarding your **MITER SAW** or when ordering repair parts.

FIGURE B PARTS LIST

KEY NO.	PART NUMBER	DESCRIPTION	QTY.	KEY NO.	PART NUMBER	DESCRIPTION	QTY.
1	A36030814204	* Spring Washer (M8).....	4	24	A19003040093	* Screw (M4 x 9 mm, Pan Hd.)	2
2	A07103080457	* Screw (M8 x 45 mm, Cap Soc. Hd.).....	4	25	503118000	Grommet	1
3	089100207024	Bevel Lock Knob	1	26	089100212700	Work Clamp Assembly	1
4	A35031030300	* Washer (M10)	1	27	518105400	Lock Plate	1
5	A35030410018	* Washer (M4)	5	28	089100307006	Pointer	1
6	089100207112	Pointer	2	29	518103100	Miter Lock Handle.....	1
7	A10003040107	* Screw (M4 x 10 mm, Pan Hd.)	3	30	A36030612157	* Spring Washer (M6)	2
8	588058200	Lock Bolt	1	31	A07003060257	* Cap Screw (M6 x 25 mm).....	2
9	A36031018255	* Spring Washer (M10).....	3	32	518104200	Control Arm.....	1
10	089100212706	Pivot Support Assembly (Inc. Key Nos. 11-16).....	1	33	A31703010008	* Lock Nut (M10).....	1
11	A49010020056	Rivet (Ø2.5 x 5 mm).....	6	34	A35031025153	* Washer (M10)	2
12	089100212005	Bevel Scale	1	35	A36131020100	* Spring Washer (M10).....	1
13	089100207050	Pivot Support	1	36	089100210001	Base	1
14	089100207023	Support Bracket Assembly	1	37	089100212001	Miter Scale	1
15	589011308	Washer	1	38	089100210009	Wear Pad.....	5
16	589010200	Pivot Shaft.....	1	39	089100207097	“No Hands Zone” Label	2
17	A30003006003	* Hex Nut (M6)	2	40	588071004	“No Hands Zone” Boundary Line.....	2
18	578206000	* Bolt (M6 x 16 mm, Hex Hd.).....	2	41	089100212705	Base Assembly (Inc. Key Nos. 11 and 36-40)	1
19	A16003040083	* Screw (M4 x 8 mm, Flat Hd.).....	4	42	518106300	Table Spindle.....	1
20	089100207036	Throat Plate (Table Insert).....	1	43	A07003100256	* Cap Screw (M10 x 25 mm).....	2
21	089100208008	Miter Table.....	1	44	089100207113	* Blade Wrench (M35 x 115 mm).....	1
22	089100207018	Fence	1		987000329	Operator’s Manual	
23	089100207030	Safety Guard	1		8-05-08 (Rev:01)		

* Standard Hardware Item – May Be Purchased Locally

RYOBI 10 in. COMPOUND MITER SAW – MODEL NUMBER TS1342L



WIRING DIAGRAM