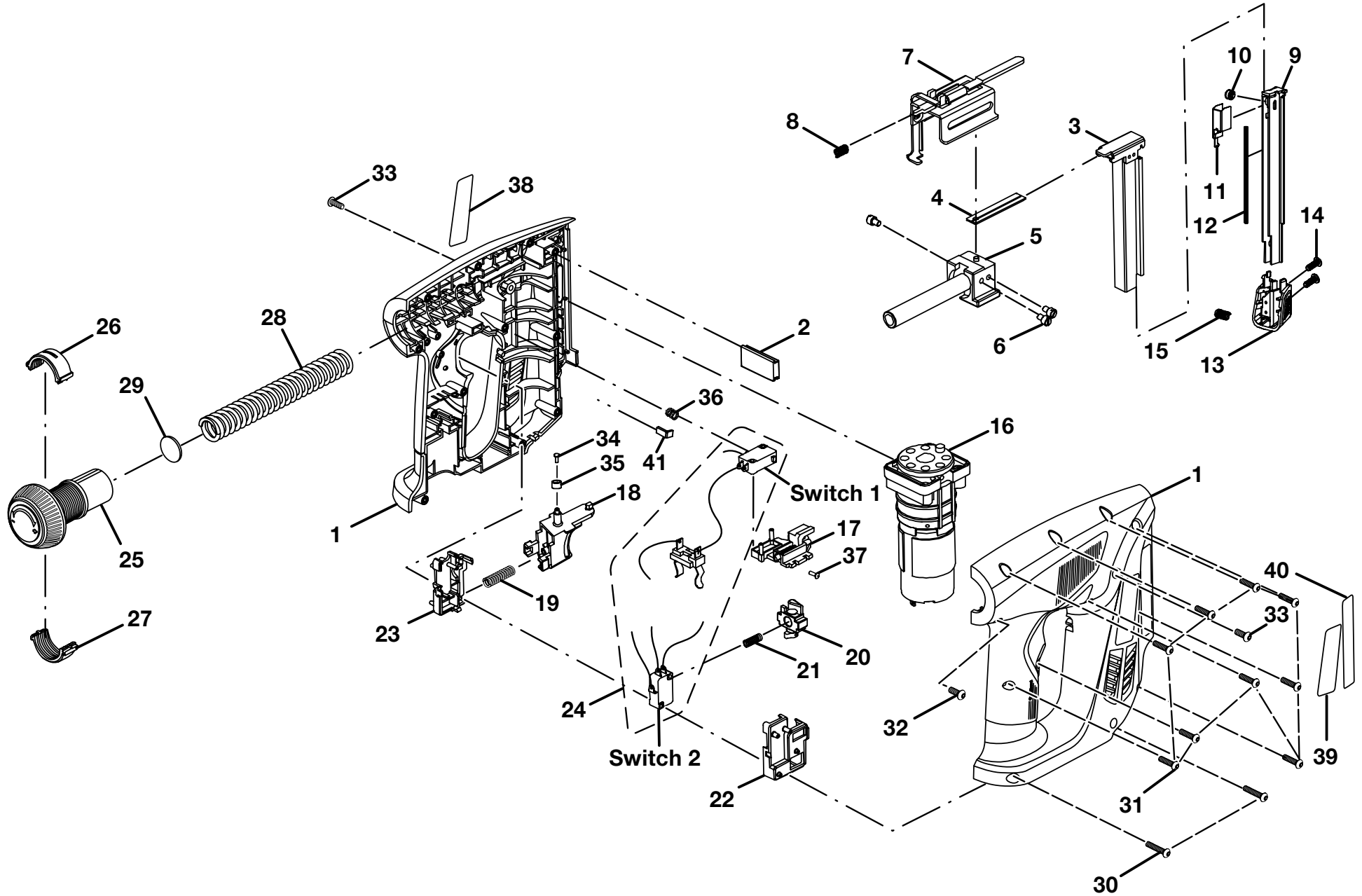


**RYOBI
18 VOLT STAPLER
MODEL NO. P301
REPAIR SHEET**

RYOBI 18 VOLT STAPLER – MODEL NUMBER P301



RYOBI 18 VOLT STAPLER – MODEL NUMBER P301

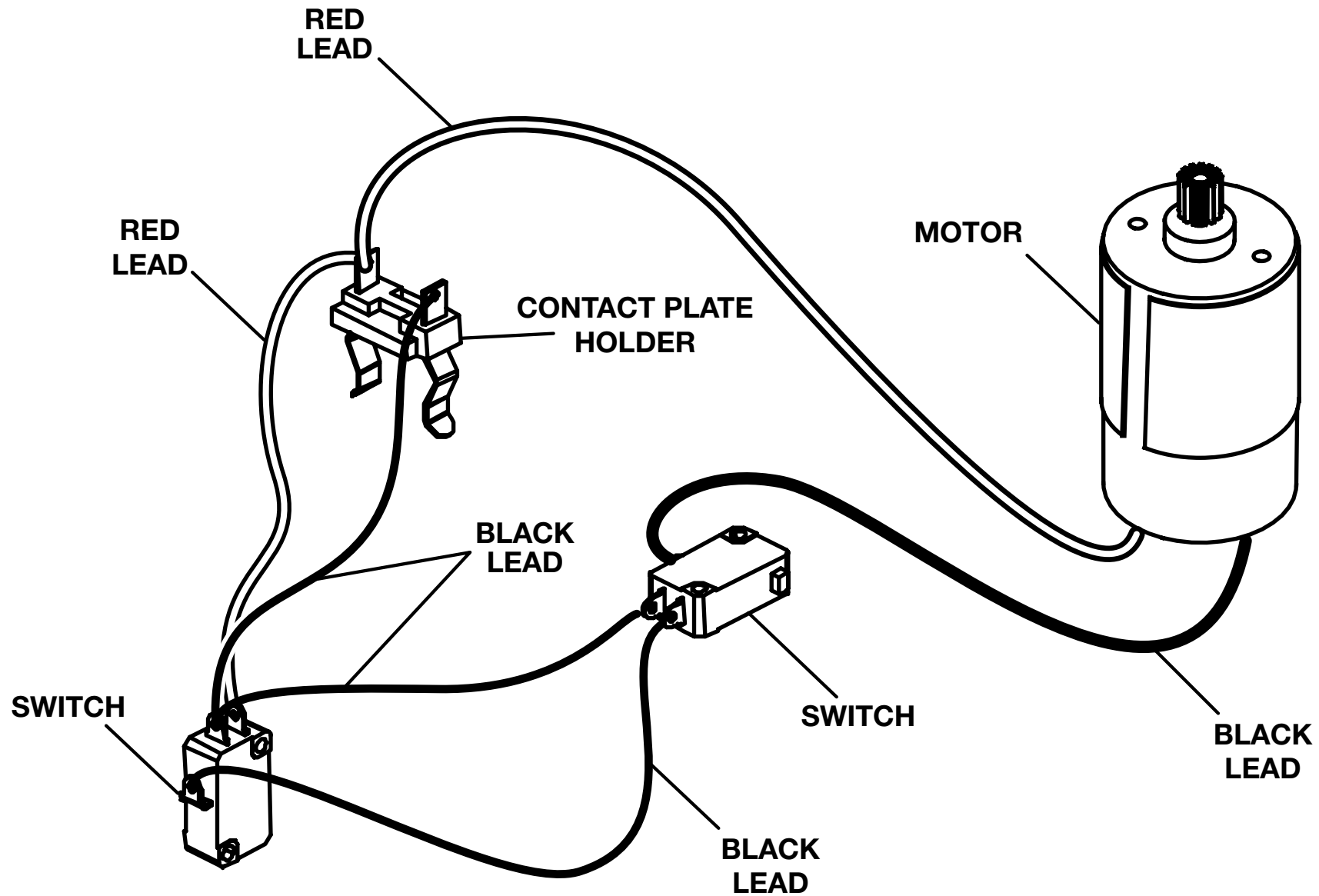
The model number will be found on a plate attached to the motor housing. Always mention the model number in all correspondence regarding your **STAPLER** or when ordering repair parts.

PARTS LIST

KEY NO.	PART NUMBER	DESCRIPTION	QTY	KEY NO.	PART NUMBER	DESCRIPTION	QTY
1	019006001045	Housing Assembly	1	24	019006001025	Switch Assembly.....	1
2	019006001003	Damper	1	25	019006001026	Force Adjustment Knob	1
3	019006001004	Slide Guide Assembly.....	1	26	019006001027	Upper Cover - Force Adjustment Knob	1
4	019006001005	Puncher.....	1	27	019006001028	Lower Cover - Force Adjustment Knob	1
5	019006001006	Hammer Block Assembly.....	1	28	019006001029	Spring.....	1
6	019006001007	* Screw (M5 X 6 mm).....	3	29	019006001030	Spacer.....	1
7	019006001008	Safety Foot Assembly.....	1	30	019006001031	* Screw (M4.2 X 23 mm).....	2
8	019006001009	Spring - Safety Foot.....	1	31	019006001032	* Screw (M4.2 X 17 mm).....	9
9	019006001010	Magazine	1	32	019006001033	* Screw (M4.2 X 12 mm).....	1
10	019006001011	Wheel	1	33	019006001034	* Screw (M4 X 10 mm).....	2
11	019006001012	Staple Pusher.....	1	34	019006001046	* Screw (M2).....	1
12	019006001013	Spring - Staple Pusher.....	1	35	019006001047	Circle Ring.....	1
13	019006001014	Latch	1	36	019006001048	Spring.....	1
14	019006001015	* Screw (M3 X 14 mm).....	2	37	019006001049	Screw	1
15	019006001016	Spring	1	38	019006001041	Logo Label	1
16	019006001017	Motor With Gear Box Assembly	1	39	019006001042	Data Label	1
17	019006001018	Fixture Assembly - Switch 1	1	40	019006001043	Warning Label	1
18	019006001019	Trigger	1	41	019006001052	Metal Block	1
19	019006001020	Spring - Trigger	1	42	019006001035	Staple (Stick, T50 5/16 in. Not Shown).....	1
20	019006001021	Slide Assembly - Switch 2	1	43	019006001036	Staple (Stick, T50 9/16 in. Not Shown).....	1
21	019006001022	Spring - Slide Assembly.....	1		983000955	Operator's Manual	
22	019006001023	Upper Cover - Switch 2	1		03-08-07		
23	019006001024	Lower Cover - Switch 2	1		(Rev:01)		

*** Standard Hardware Item – May Be Purchased Locally**

RYOBI 18 VOLT STAPLER – MODEL NUMBER P301



WIRING DIAGRAM